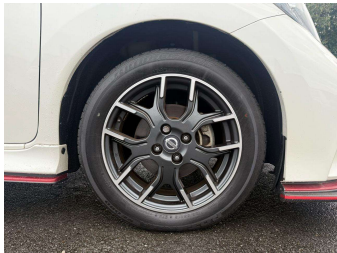


2015 Nissan Note



Purchase Price

\$10,995

Includes GST, Registration & Licensing

Indicative repayments

\$71.76 per week*

Based on a 48 month term & no deposit.
Total repayments (208) = \$14,926.22

Gain peace of mind with
Mechanical Breakdown
Insurance. **Ask us how.**

Top features

» AA Appraised

» ABS Braking

» ABS Braking

» Air Conditioning

» Alloys

» Audio Control

» Auto Lights

» Central Locking

» Central Locking

» Child seat anchor poin...

» ECO MODE

» Electric Mirrors

» Factory Tint

» Immobiliser

» Push Start

» Radio/CD

» Rear Wiper

» Remote locking

Body Style

5 door, Hatchback

Odometer

85,098 km

Engine

1200 cc

Fuel Type

Petrol

Transmission

Automatic

Wheels

16", Factory Alloys

VIN

7AT0DH79X23321222

Interior

Black, Cloth

Safety



Based on 2024 VSRR rating

Reg No.

-

Ext Colour

White

History

-

Seats

5 seats, Cloth

CO2 Emissions

★★★★★☆☆

126 grams/km

Energy Economy

★★★★☆☆☆☆

Annual fuel cost of \$2,120

5.4L per 100km

Cost per year is an estimate based on petrol price of \$2.80 per litre and an average distance of 14000 km. Emissions and Energy Economy figures standardised to 3P WLTP.

Stock ID: 17800



The Cheap Car Place | Phone 07 847 1869 | Email
sales@thecheapcarplace.co.nz
31 Greenwood Street, Frankton, Hamilton 3204, New Zealand
www.thecheapcarplace.co.nz

★★★★★

4.63 | 594 reviews

* The Cheap Car Place is not a lender nor a financial adviser. Any amounts displayed should not be seen as an offer of finance or taken as financial advice. The interest rate, fees and loan term used in this calculation may not actually represent those available from lenders. Actual interest rates, fees and loan terms will vary per lender and are typically based on an assessment of your credit risk and responsible lending criteria. Any repayment amounts displayed are indicative only and have been calculated using several other indicative inputs. The interest rate used in this calculation is an arbitrary 13.95%, however exact interest rates vary per lender. The term of the loan used in this calculation is 48 month. Exact terms available vary per lender although options typically include 6, 12, 18, 24, 36, 48 and 60 months. This calculation also includes a typical mandatory fee charged by lenders. This is a one-off establishment fee of \$395.00. Typically, this fee can be paid upfront or, as in this calculation, be capitalised over the contract term, ie. included in the loan amount. This fee can vary per lender and other non-mandatory fees and charges may also apply. The total amount of repayments has been calculated by multiplying 208 weekly repayments (based on a 48 month term) by the weekly repayment amount of \$71.76 which equals \$14,926.22. This calculator does not consider any of your own personal circumstances and we strongly suggest you seek budgeting advice prior to committing to any loan contract. Responsible lending criteria and lender terms and conditions will likely apply to any finalised loan contract. Proof of security and/or vehicle insurance may also be required before proceeding.