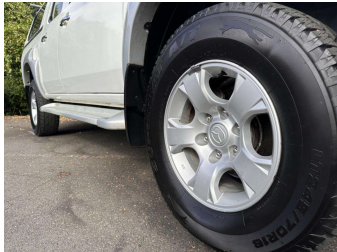


2011 Mazda BT-50 D/CAB W/S 2WD



Purchase Price

\$13,995

Includes GST, Registration & Licensing

Indicative repayments

\$90.66 per week*

Based on a 48 month term & no deposit.
Total repayments (208) = **\$18,857.62**

MARAC

Gain peace of mind with
Mechanical Breakdown
Insurance. **Ask us how.**

JANSSEN
INSURANCE

Top features

- » Air Conditioning
- » Alloys
- » Canopy
- » CD Player
- » Central Locking
- » Central Locking
- » Digital Display
- » Electric Mirrors
- » Factory Tint
- » Radio/CD
- » Remote locking
- » Roof Rack
- » Smart Key
- » Towbar
- » Wellside

Body Style

4 door, Ute

Odometer

362,256 km

Engine

2953 cc

Fuel Type

Diesel

Transmission

Manual, Rear Wheel

Wheels

-

VIN

MM0UNY0E400903828

Interior

Blue-Grey, Cloth

Safety



Based on 2024 UCSR rating
for 06-11 models

Reg No.

GAN345

Ext Colour

White

History

NZ New, 7 owners

Seats

5 seats

CO2 Emissions

☆☆☆☆☆☆

288 grams/km

Energy Economy

★☆☆☆☆

**Annual fuel cost of \$4,090
10.8L per 100km**

Cost per year is an estimate based
on diesel price of \$2.00 per litre and
an average distance of 14000 km.
Includes Road User Charges (RUC).
Emissions and Energy Economy
figures standardised to 3P WLTP.

Stock ID: 17391

**The Cheap
Car Place**

The Cheap Car Place | Phone 07 847 1869 | Email
sales@thecheapcarplace.co.nz
31 Greenwood Street, Frankton, Hamilton 3204, New Zealand
www.thecheapcarplace.co.nz



★★★★★
4.63 | 569 reviews

* The Cheap Car Place is not a lender nor a financial adviser. Any amounts displayed should not be seen as an offer of finance or taken as financial advice. The interest rate, fees and loan term used in this calculation may not actually represent those available from lenders. Actual interest rates, fees and loan terms will vary per lender and are typically based on an assessment of your credit risk and responsible lending criteria. Any repayment amounts displayed are indicative only and have been calculated using several other indicative inputs. The interest rate used in this calculation is an arbitrary 13.95%, however exact interest rates vary per lender. The term of the loan used in this calculation is 48 month. Exact terms available vary per lender although options typically include 6, 12, 18, 24, 36, 48 and 60 months. This calculation also includes a typical mandatory fee charged by lenders. This is a one-off establishment fee of \$395.00. Typically, this fee can be paid upfront or, as in this calculation, be capitalised over the contract term, ie. included in the loan amount. This fee can vary per lender and other non-mandatory fees and charges may also apply. The total amount of repayments has been calculated by multiplying 208 weekly repayments (based on a 48 month term) by the weekly repayment amount of \$90.66 which equals \$18,857.62. This calculator does not consider any of your own personal circumstances and we strongly suggest you seek budgeting advice prior to committing to any loan contract. Responsible lending criteria and lender terms and conditions will likely apply to any finalised loan contract. Proof of security and/or vehicle insurance may also be required before proceeding.

Generated 27 May 2025 10:04